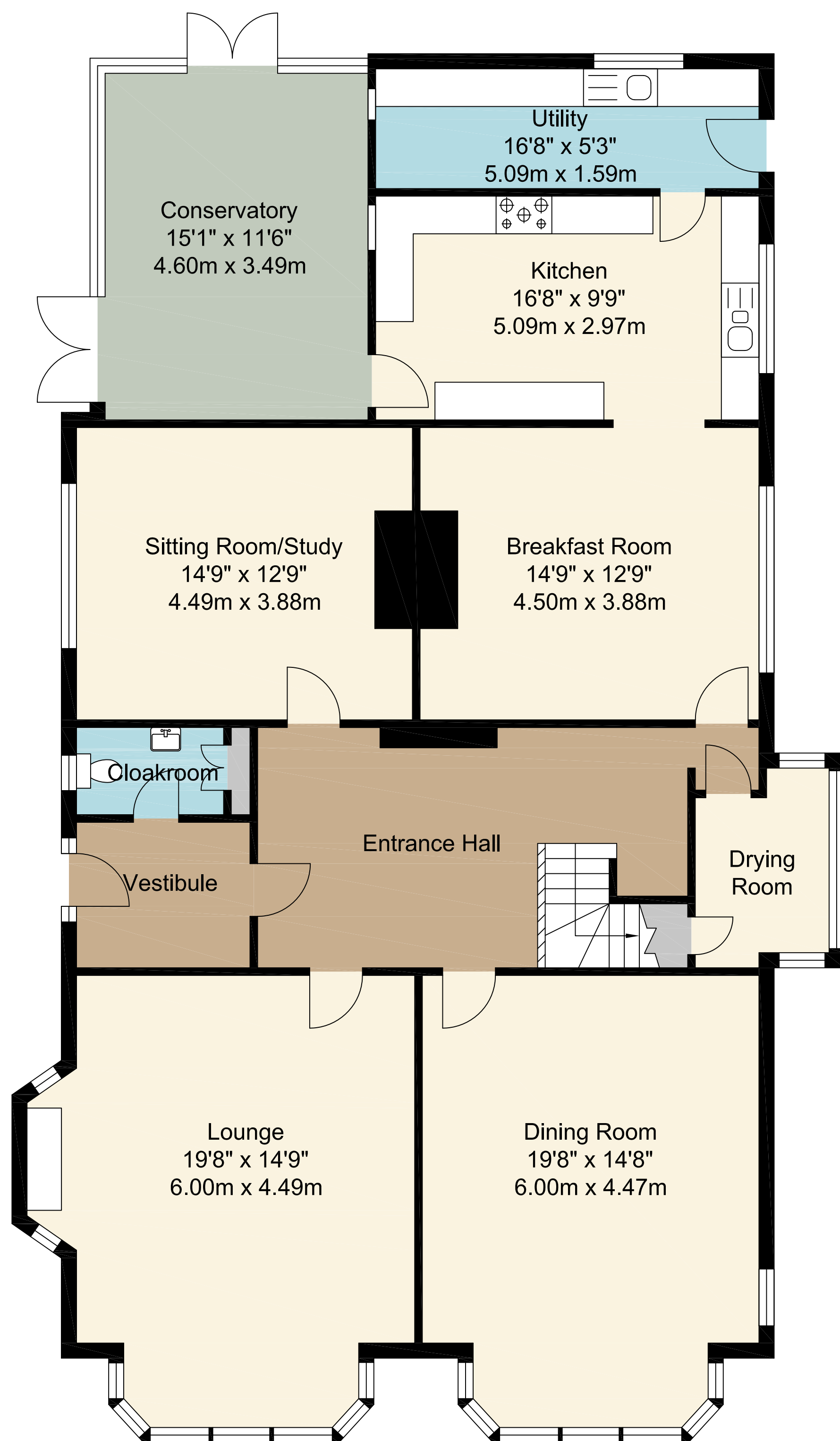
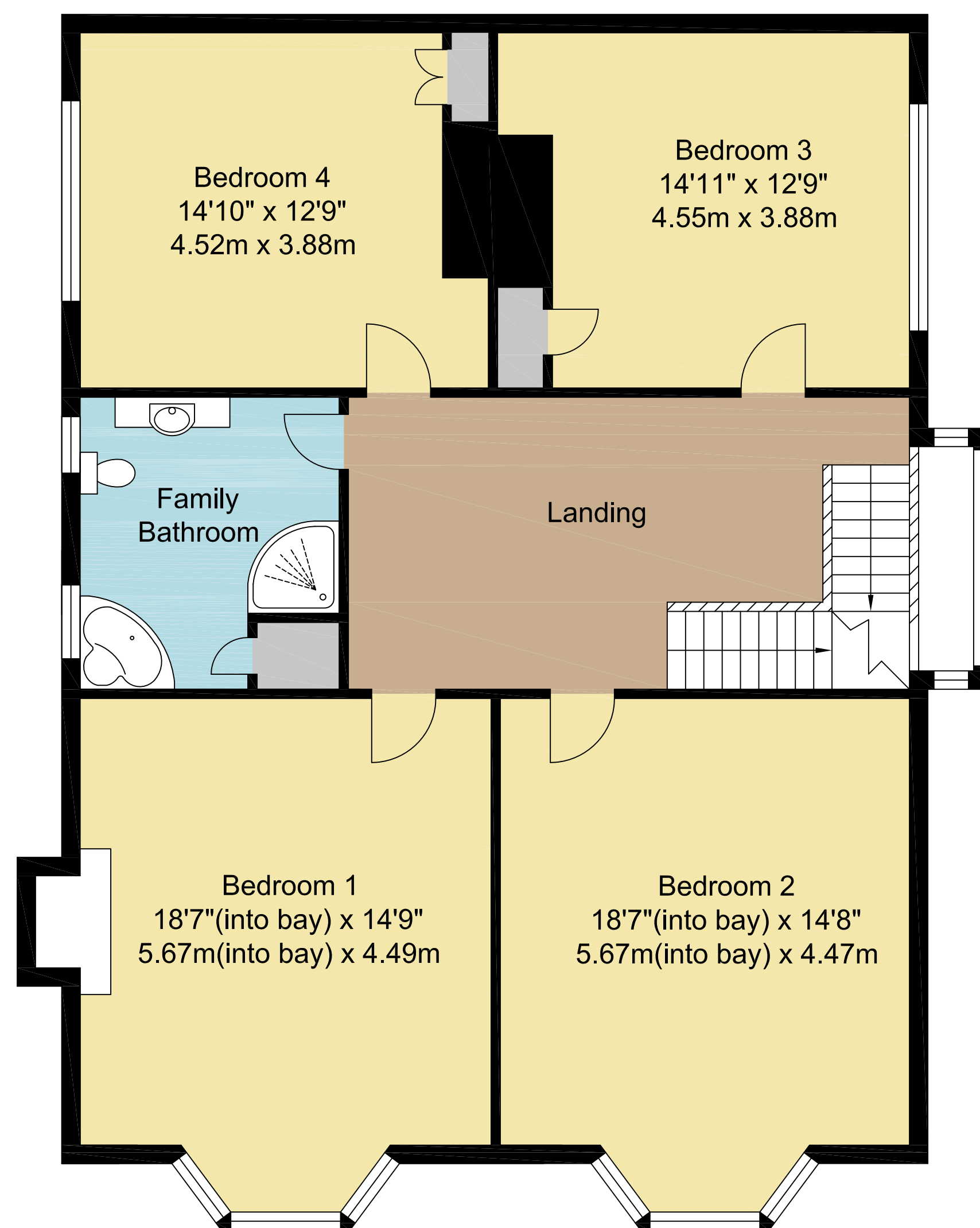


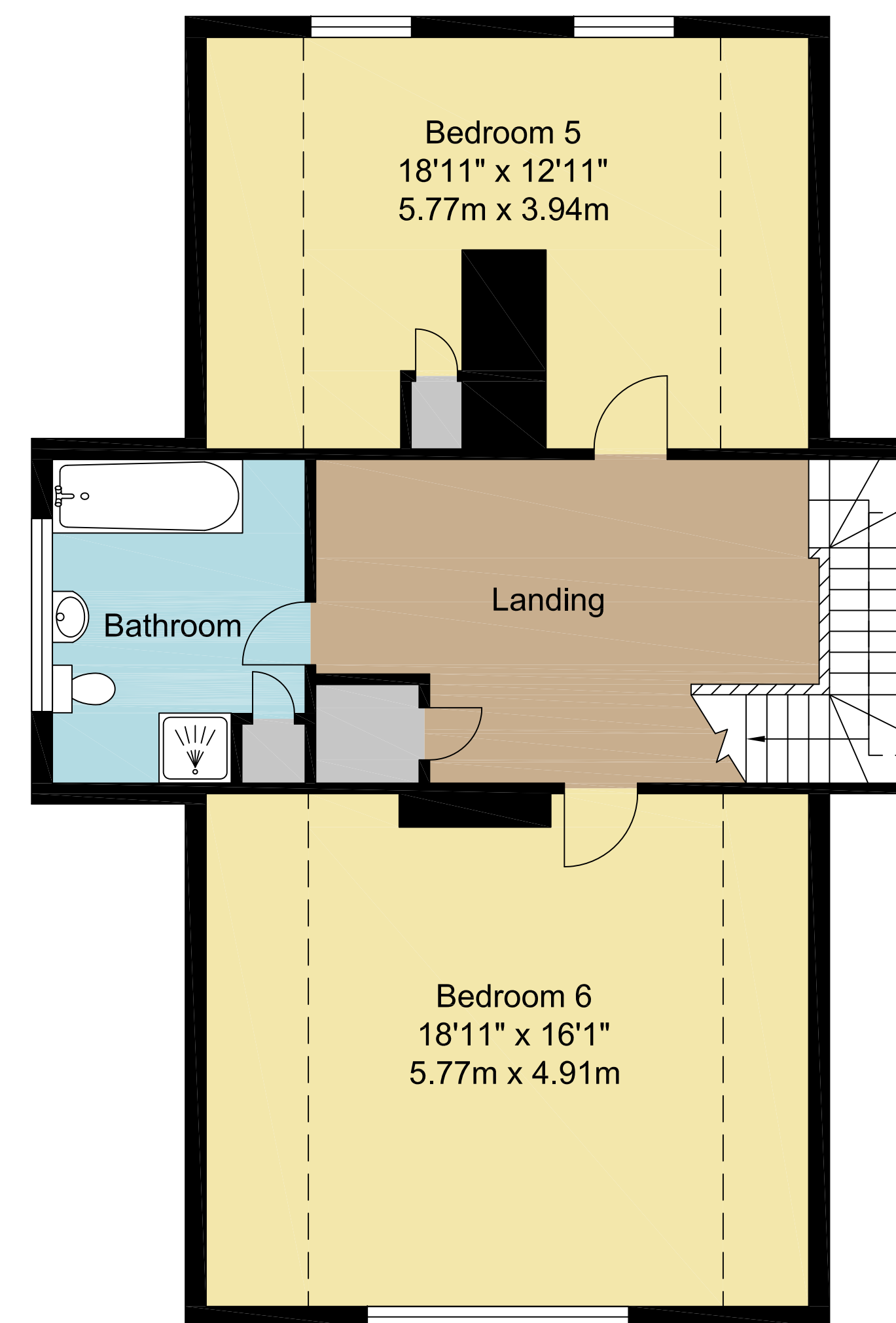
196 Chorley New Road, Bolton BL1 5AA



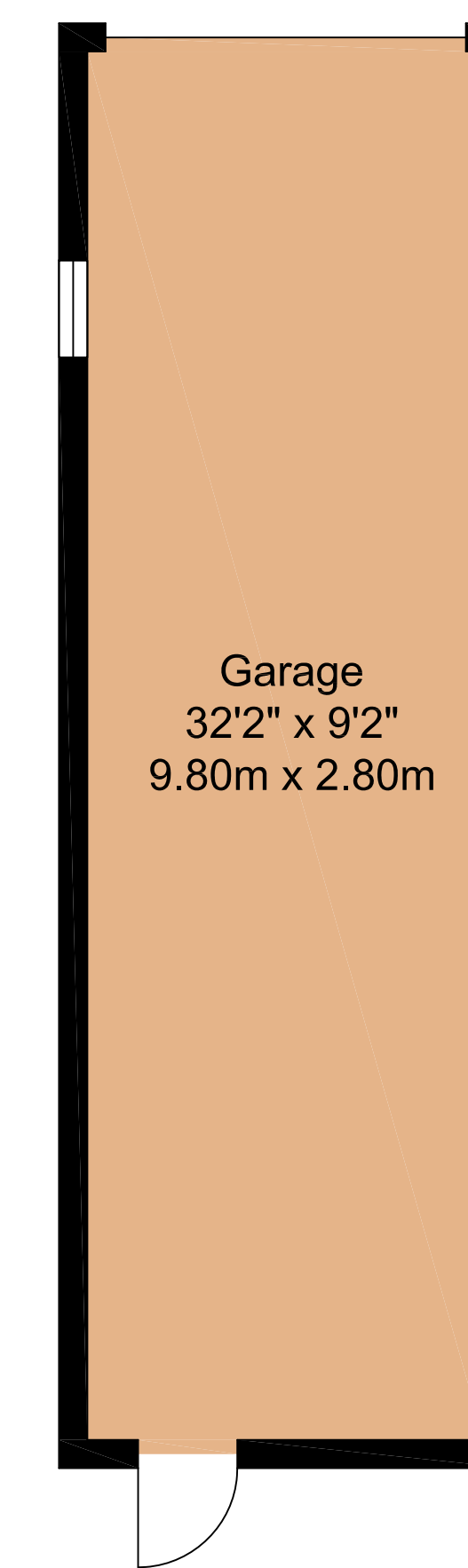
Ground Floor
Approximate Floor Area
1725.45 SQ.FT.
(160.30 SQ.M.)



First Floor
Approximate Floor Area
1247.10 SQ.FT.
(115.90 SQ.M.)



Second Floor
Approximate Floor Area
840.40 SQ.FT.
(78.10 SQ.M.)



Garage
Approximate Floor Area
295.36 SQ.FT.
(27.44 SQ.M.)

----- Restricted Head Height

TOTAL APPROX FLOOR AREA 4109.01 SQ.FT. (381.74 SQ. M.)

Whilst every attempt has been made to ensure the accuracy of the floor plan contained here, measurements of doors, windows, rooms and any other items are approximate and no responsibility is taken for any error, omission or misstatement. This plan is for illustrative purposes only and should be used as such by any prospective purchaser.